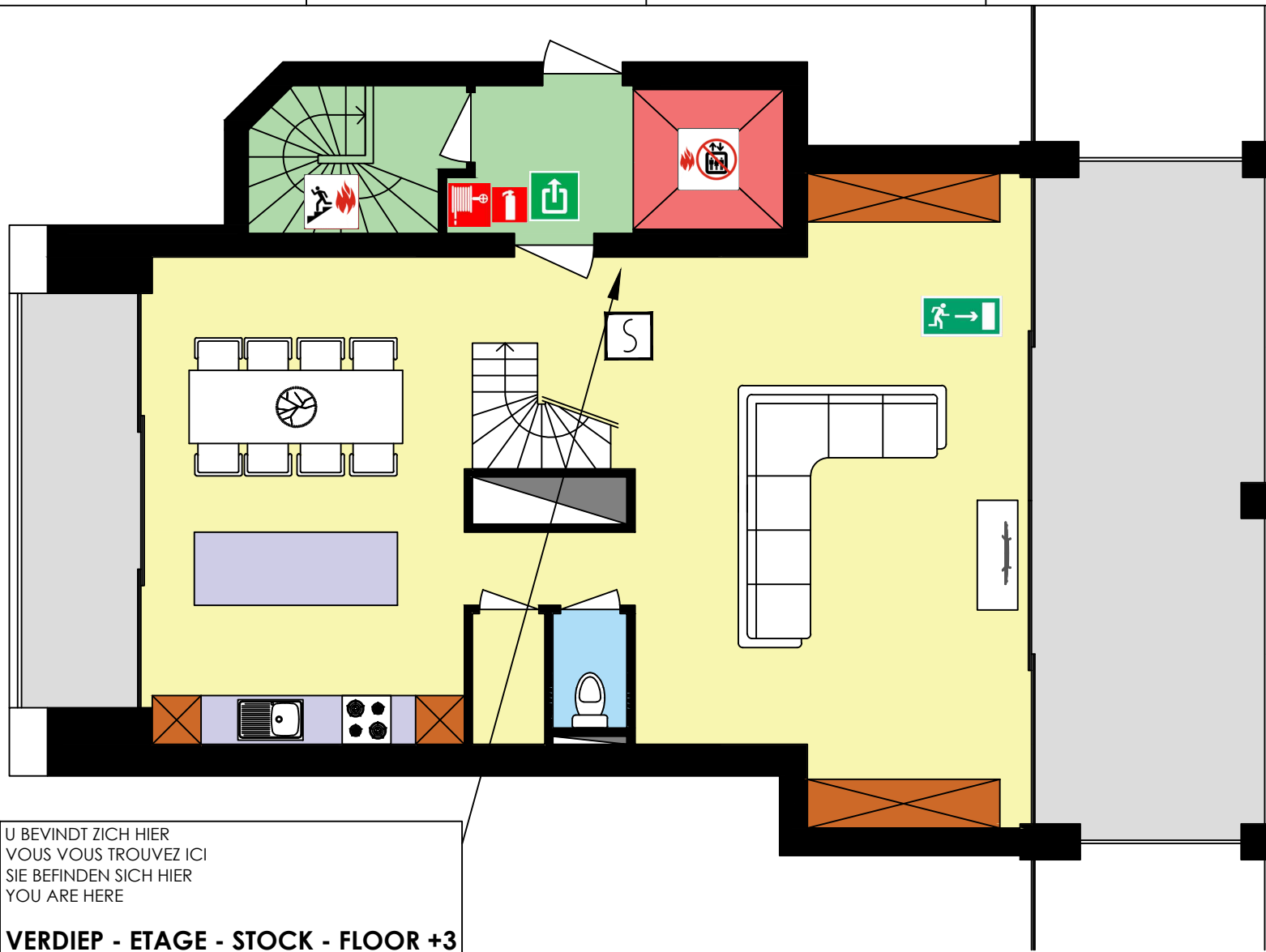


EVACUATIEPLAN - APPARTEMENT B03.02







-  Brandblusser - Extincteur
Feuerlöscher - Extinguisher
-  Rookmelder - Détecteur de fumée
Rauchmelder - Smoke detector
-  Lift - Ascenseur
Aufzug - Elevator
-  Trap - Escalier
Treppen - Stairs




U BEVINDT ZICH HIER
VOUS VOUS TROUVEZ ICI
SIE BEFINDEN SICH HIER
YOU ARE HERE

VERDIEP - ETAGE - STOCK - FLOOR +3

WAT TE DOEN BIJ BRAND EN CAS D'INCENDIE

1. MELDEN - AVERTIR
 **112**
Noodnummer
2. BLUSSEN - ETEINDRE
 Brandblusser  Brandhaspel
3. EVACUEREN - EVACUER
 Uitgang  Nooduitgang
4. VERZAMELEN
 Verzamelplaats

 Bij brand:
Verboden de lift
te gebruiken

